

Upgradation & Migration of Oracle Apps from 11i to R12 for Dairy Industry



CASE STUDY



Project Overview
Upgrade of Oracle Apps R 11i to R 12.



Business Function
Dairy Industry



8
Months
Engagement Length



Applications / Modules
OPM, MFG



7
Team Size & Structure



2000+
Target Users



2009
Year of Upgrade



THE CLIENT

The client is one of the top dairy product manufacturers in India. It delivers quality dairy including processed cheese, raw cheese, ghee, butter, juices and many more.

“
Your skills are exceptional and your attitude to take on newer and more things will take you a long way.

- Says the Client



CHALLENGES

- Complexity of the application due to customizations

SOLUTIONS & SERVICES

Solutions :

- Upgrade from Oracle 11i to R12 and customization of Release 12.1.3 Oracle Applications
- OPM modules with Discrete Manufacturing
- Migrated Reports from 11i version to r12 version
- Developed New Reports
- Personalized forms as per the requirements
- Developed interface program and used API

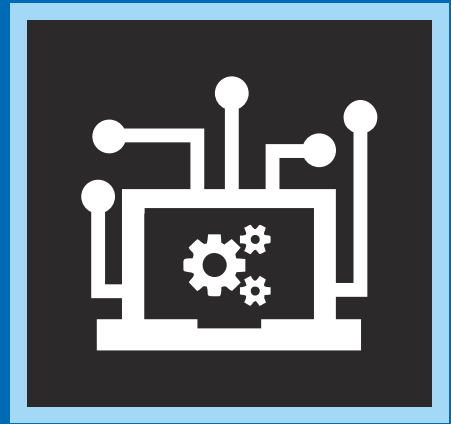
SERVICES

- Up-gradation and Data Migration

VOC & POSITIVE IMPACT

- Consolidations of multiple databases to one central database
- Implementation of more OOB functionalities

TECHNOLOGY USED



- Oracle Applications R12,
- SQL
- PL/SQL
- TOAD
- Reports
- UNIX
- Windows XP



business@altencalsoftlabs.com
www.altencalsoftlabs.com

ALLEN Calsoft Labs is a next gen [digital transformation](#), [enterprise IT](#) and [product engineering services provider](#). The company enables clients innovate, integrate, and transform their business by leveraging disruptive technologies like [mobility](#), [big data](#), [analytics](#), [cloud](#), [IoT](#) and software-defined networking (SDN/NFV). ALLEN Calsoft Labs provides concept to market offerings for industry verticals like education, healthcare, networking & telecom, hi- tech, ISV and retail. Headquartered in Bangalore, India, the company has offices in US, Europe and Singapore. ALLEN Calsoft Labs is a part of ALLEN group, a leader in technology consulting and engineering services.