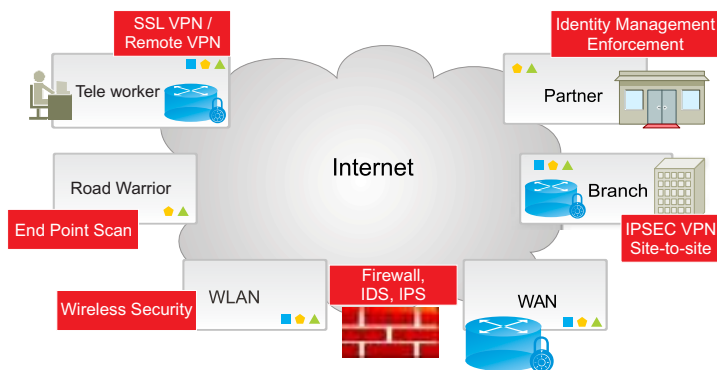


# Engineering Services for Network Security Products

## Overview

ALTEN Calsoft Labs acts as extended engineering partner for equipment and software vendors in the Network and Information Security industry. Our customers in this area appreciate our deep domain knowledge in areas, cutting across information security, network security, identity and access management, data protection, encryption and cloud security. ALTEN Calsoft Labs' expertise and services add value to our clients' business in not only the security product domain but also in a variety of converging technology products where integration of security features is critical.

## ALTEN Calsoft Labs' Network Security Expertise



## Firewalls, IDS, IPS

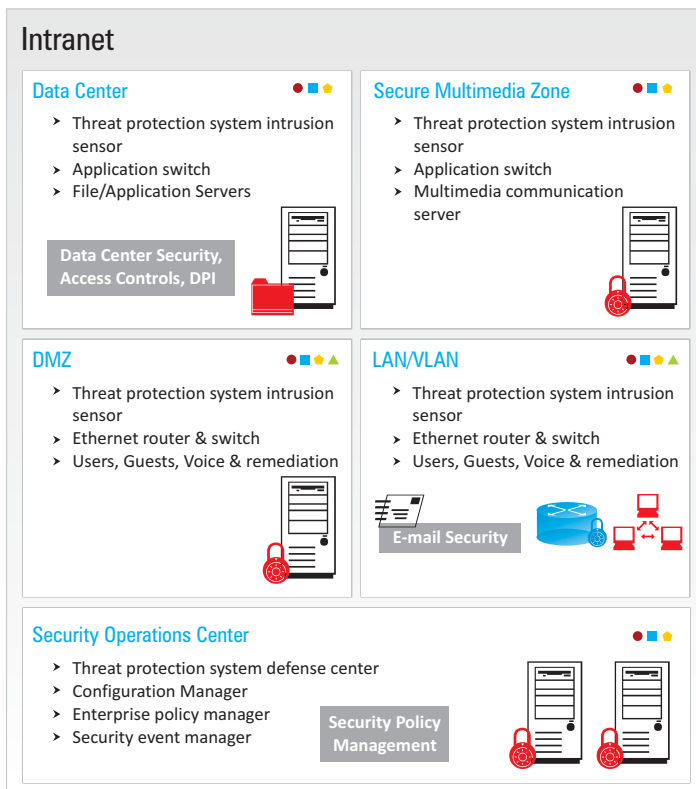
- Stateful Inspection Firewall, Network Processors or
- ASIC based Firewall Security Engines Firewall Integration with VPN, Antivirus, Endpoint Security IDS, IPS technologies
- Firewall Products expertise from SOHO/ROBO appliances to Multi-Gigabit core network or Data center security platforms
- Signature Based as well as Stateful and Adaptive Intrusion Detection and Prevention Technologies

## Data Center Security, Access Control & DPI

- Application & Protocol Classification
- Traffic/Flow Identification Web App, VOIP, IPTV/Video, P2P, Gaming, Messaging, Email
- Policy Enforcement Forward, Divert Traffic, Apply QOS, Traffic Shaping Policies, Prioritize & Firewall Traffic
- Reporting & Monitoring Protocols Decode Report, Application Specific Reports, Security Attacks Reports, Logs

## Wireless Security

- Wireless Network Scans and Detection of rogue devices and intruders
- Wireless Security Protocols, WEP, WPA, TKIP, EAP, LEAP, 802.11i
- Wireless Intrusion Prevention System (WIPS) Real-time Device Discovery, Connection Analysis, Traffic Analysis, Location Tracking, Automated Threat Detection and Alarm, Connection Termination



## Endpoint Scan

- Endpoint Security Client/Agent, Clientless Endpoint Security
- Real time Analysis and Prevention, Security Policy Enforcement
- Application Check, Registry Control, Antivirus,
- Antispyware Status Checks.
- Real-time correlation at the agent and enterprise levels
- Endpoint Behavior analysis, Event Management
- Integration with Security Gateways, VPNs, Firewalls

## VPN, Remote VPN

- IPSEC, IKE Protocol, SSL VPN
- Authentication AAA -Radius, Diameter, PKI, EAP
- VPN Topologies, Mesh, Hub & Spoke, Remote Access

## Email Security

- Email Inspection, Content Inspection and Filtering
- Encryption using TLS, S-MIME, PGP

## Case Studies

### Access Control System for Cable Network

ALTEN Calsoft Labs developed and tested a cable network access system for a major cable TV provider in US. This solution comprised of hardware and supporting software to control and monitor access to the cable Distribution Box. The system was successfully tested over cable network.

### Network Firewall Development

ALTEN Calsoft Labs helped a leading communication equipment manufacturer develop a network switched firewall. The firewall is a high-performance firewall system for network security. The system uses a versatile, multi-component approach to deliver unparalleled firewall processing power, reliability, and scalability.

### Testing a VPN Gateway

ALTEN Calsoft Labs carried out end-to-end testing of the VPN Gateway for a leading equipment vendor. The VPN Gateway is an SSL and IPSEC remote access security solution with flexible access options including browser based, on demand and installed SSL clients, and IPSEC client support.

## Identity Management Enforcement

- Identity Management Product Expertise, Sun IDM, Oracle IDM
- Assessment/Architecture/Implementation/ Integration/Deployment Services
- Single Sign-on, Access Policies, Authorization, Provisioning, Policy Management
- Identity Management Technologies LDAP, SAML, Web2.0, Project Liberty Standards

## Network Processor

- Packet Processing / Data Plane software Development
- Wire Speed Security Implementations
- Control Plane Software Interface
- Broadcom, Intel IXP, Marvell, Cavium Expertise
- Use Crypto Accelerator, Use NP Tree Search , Hashing Capabilities, Packet Processing Capabilities
- L2 Forwarding, IP Forwarding, Traffic Engineering, Deep Packet Inspection, High Availability Implementations

### ABOUT ALTEN CALSOFT LABS

ALTEN Calsoft Labs is a next gen digital transformation, enterprise IT and product engineering services provider. The company enables clients innovate, integrate, and transform their business by leveraging disruptive technologies like mobility, big data, analytics, cloud, IoT and software-defined networking (SDN/NFV). ALTEN Calsoft Labs provides concept to market offerings for industry verticals like education, healthcare, networking & telecom, hi-tech, ISV and retail. Headquartered in Bangalore, India, the company has offices in US, Europe and Singapore. ALTEN Calsoft Labs is a part of ALTEN group, a leader in technology consulting and engineering services.

[www.altencalsoftlabs.com](http://www.altencalsoftlabs.com)



[business@altencalsoftlabs.com](mailto:business@altencalsoftlabs.com)